



PRECorp News

SEPTEMBER 2025



PRECorp photo

PRECorp members view the electrical safety demonstration at Gillette Cam-Plex, Saturday, August 23.

PRECorp hosts 80th Anniversary Meeting

By Tim Velder, PRECorp Marketing Communications

Powder River Energy Corporation (PRECorp) offered a variety of activities for its 80th Annual Meeting at the Gillette Cam-Plex, Saturday, August 23.

The celebratory event featured a free evening concert by Kaycee native Ned LeDoux, plus a wellness fair, a power plant tour, electrical safety demonstration, updates from cooperative officers, a free steak dinner and door prizes. Attendees took home a variety of gifts including a 2026

PRECorp calendar, hats, history books, and special welcome bags from the Gillette Visitors Bureau.

Cooperative members cast ballots for three director seats, re-electing Gerry Geis (Campbell County), Jim Purdy (Johnson County), and Ty Miller (Weston County). The minimum quorum requirement of 100 members attending in-person was exceeded, and 269 votes were cast in-person or by mail.

Continued on page 4.



Regular business: 1-800-442-3630 • Report an outage: 1-888-391-6220
www.precorp.coop

In This Issue

CEO Straight Talk

Basin Electric cost
of power increase
update

Ritthaler scholarships
awarded

Time of Use hours
explained



BRIAN MILLS,
CEO

Summer is over and we are all as busy as bees getting things ready for wintertime. The defined seasons in our area really do have a way of putting brackets around life activities for us on an annual basis. Sure, the calendar events that occur, like Thanksgiving, Christmas, and Easter, etc..., help bring context for the respective season. But there are indicators of the season change that help pre-

pare us for the time ahead.

Last month at our 80th Annual Meeting, I spoke about a season change for PRECorp. For a few years after 2020, there were a couple of seasons in which we found ourselves. The first was a season of negative growth. With the social pressures on fossil fuels, there was a noticeable slowing for our large industrial members in that industry. That trend is still there but seems to be easing a bit. We have had a few sunny days telling us that there may be better weather ahead, so we remain optimistic. So while one type of member is having their own tough season, it does create a wake for all of us.

And we continue to look for other avenues to make the realities of our collective season more manageable for all of us which in turn helps them.

A second season we talked about was a season of building and construction for our generation and transmission company, Basin Electric. Given the demands for additional load that Basin is seeing all over its 9-state territory, we have to start investing now into new generation to help stabilize our future power costs. Given its not-for-profit, member-owned cooperative nature, all 139 member systems have been talking about how to best manage the needed revenue to keep Basin viable now and well into the future.

You know, if I can go off the point for a line or two... solutions that have a long-term perspective are getting harder and harder to find as new and emerging industries are rewarded for the quick turn of their dollar rather than the lasting impact to the lives they rely on to complete their respective business venture.

Our 'investors' are you, our member-owners. In a cooperative model, the rate payers are the owners, and that is why long-term solutions are so important.

Back to the point, Basin, comprised of all the different member systems, has made in the past and will continue to make, decisions based upon the long-term viability of the organization...and to do that it takes all of us staying committed together. With that said, while I am writing this column, here is what we know:

- Basin is going to need an additional 18-19% revenue to meet the obligations of the member systems.
- After discussing this reality among the members, it was decided not to try and achieve the revenue target in one year, but to do a 9-10% the first year and then make the course corrections needed as we move further down the road.
- So, more than likely, we could foresee an additional rate adjustment in subsequent years to meet obligations.

What I can tell you is that the cooperative model used to deliver your electricity, ensures that any dollars you pay in are used for your benefit or interests in keeping the company viable. Our "investors" are you, our member-owners. In a cooperative model, the rate payers are the owners, and that is why long-term solutions are so important. A cooperative's strength is in its members.

So, in closing, with seasons, there is always an end bracket that transitions us to a new season ahead. I think the following quote by Charles Swindoll expresses how we best take back control of our particular season. Swindoll said, "I am convinced that life is 10% what happens to me and 90% of how I react to it."

For PRECorp that means that 90% of our future reality will be based upon a PRECorp Team that will continue to stay focused and carry a can-do attitude, and look for ways to navigate the road ahead in keeping our service, your rates, and our partnership top priority.

Powder River, Let'er Buck!

PRECorp outlines reasons for increases in Basin Electric wholesale power rates

By Tim Velder, PRECorp Marketing Communications

Powder River Energy staff spent much of August responding to a proposal by wholesale power supplier Basin Electric to increase its rates in 2026 by double digits.

PRECorp's intermediary G&T, Members 1st Power Cooperative, and others advocated that Basin consider lessening the impact of such an increase so its member cooperatives and consumer-members could absorb this increase over a two-year period.

The Basin Board of Directors was slated to take a final vote on the 2026 rates at its September meeting. That plan would amount to approximately a 9.8% increase the cost of power from its member cooperatives. This is a \$7 to \$10 increase per month on average residential usage. This will vary based on individual usage. These estimates are also preliminary, however, and are subject to change.

Basin has cited a variety of reasons for seeking the additional revenue. The primary reason is the Bismarck-based power generator is raising capital to build new generation stations in its service territory. These stations are needed to supply adequate power for the growing appetite for electricity in the central United States.

Secondarily, Basin is required to provide adequate power generation resources to satisfy regional grid sta-

bility requirements. In times of maximum demand, Basin must literally overbuild infrastructure to meet the highest possible demand.

Basin is also faced with increasing costs to build generation and transmission facilities. For instance, the Dry Fork Station in Gillette was constructed at a cost of \$800 per megawatt produced. Today, generation facilities are running about \$2,800 per megawatt.

PRECorp officials recognize these challenges Basin is confronting, but is advocating for a softer impact on its members.

Some of the softening strategies include the predictable distribution of Basin capital credits to cooperatives, which would alleviate the pressure at the local level. Additionally, PRECorp is calculating a cost of power adjustment for 2026. This adjustment would compensate members for actual power costs in 2025.

Details and specific numbers remain under review as of press time.

Go to www.precorp.coop for information updates. A clearer picture is likely to emerge in October. PRECorp CEO Brian Mills will host a telephone town hall meeting for members on Thursday, November 20, at 6:30 p.m. to offer additional details.

Events Calendar

The list of PRECorp events includes Board meeting dates, holidays, telephone town hall meetings, and more.

- **Tuesday, Sept. 23** - PRECorp Foundation Board of Directors meeting, 9 a.m., teleconference.
- **Tuesday, October 21** - PRECorp Board of Directors meeting, 9:30 a.m., Sundance.
- **Tuesday, October 28** - PRECorp Foundation Board of Directors meeting, 9 a.m., Gillette.
- **Tuesday, November 11** - Veterans Day Holiday, PRECorp offices closed, call 1-888-391-6220 with an outage.
- **Thursday, November 20** - Lineman Scholarship Raffle drawing and CEO Telephone Town Hall, 6:30 p.m.

- **Thursday, November 27** - Thanksgiving Day Holiday, PRECorp offices closed, call 1-888-391-6220 with an outage.
- **Friday, November 28** - Thanksgiving Day Holiday, PRECorp offices closed, call 1-888-391-6220 with an outage.
- **Wednesday, December 24** - Christmas Eve Holiday, PRECorp offices closed, call 1-888-391-6220 with an outage.
- **Thursday, December 25** - Christmas Day Holiday, PRECorp offices closed, call 1-888-391-6220 with an outage.



Annual Meeting...

from page 1.



PRECorp photos by Corrie Burgess & Tim Velder

Above, (from left) PRECorp CEO Brian Mills discusses coop issues during his annual report.

Below, a future member takes home PRECorp gift items offered to members who attended the meeting.



Special guests included Wyoming Rural Electric Association (WREA) Executive Director Shawn Taylor, Basin Electric VP of Member Services Chris Baumgartner and Basin VP of Strategy & Communications Andy Buntrock.

The primary message of the day is an anticipated power cost increase being passed down from Basin Electric to its member cooperatives. PRECorp CEO Brian Mills said the numbers are not finalized yet, but could be as high as 10% in 2026, and another 10% in 2027.

Mills emphasized the rate increase is more about the realities of local cooperatives controlling where their power comes from. In order to control the power generation, new facilities must be built to meet increasing demand, follow rules of the regional power grid, and satisfy financial lenders.

"The cost of a kilowatt for Basin (when Dry Fork Station was built)...was \$800. To make that electron today is about \$2,800. That's creating some tension, risk tolerance, and member needs."

Mills said that without the large family of cooperatives under the Basin umbrella, these costs would be much higher and likely without local input in the decisions.

"Instead of an 18% increase, we asked them (Basin) to create a more modest, stepped approach," Mills said. "Basin came back with 'We'll start with 9 or 10 percent.'"

Mills also said that a threat to cooperative independence in Wyoming is third-party generation proposals where a large power user generates its own electricity, but offers to sell the excess to neighboring users. This could threaten the territories of electric cooperatives.

Continued on page 5.



Annual Meeting...

PRECorp Board Secretary-Treasurer Gerry Geis outlined the highlights of the annual financials of the cooperative. "The employees and the board work hard to keep the coop financially stable," Geis said. "We are one of the top coops in the nation and we have been for a long time."

Board President Jim Purdy highlighted the changes on many fronts since the last annual meeting only 12 months ago. "We know this journey since 1945 has not been an

easy one. PRECorp doesn't sit back and wait for things to happen. We step up to meet coming challenges and seize opportunities with a transparent and thoughtful approach," Purdy said. "Part of this approach is to own the troubling events that happen around us. We don't blame 'they' or 'them' for what is happening to us. Instead we take an 'I' and 'We' approach to controlling our destiny, implementing solutions, and being an inspiring example

from page 4.

Continued on page 8.



PRECorp photos by Corrie Burgess & Tim Velder

Top left, PRECorp Director Paul Baker, left, presents the Earl Christensen Award to State Senator Eric Barlow (R-Gillette).

Top right, PRECorp members enjoy a barbecue steak lunch prepared by Clayton Sander, right, for the Annual Meeting.

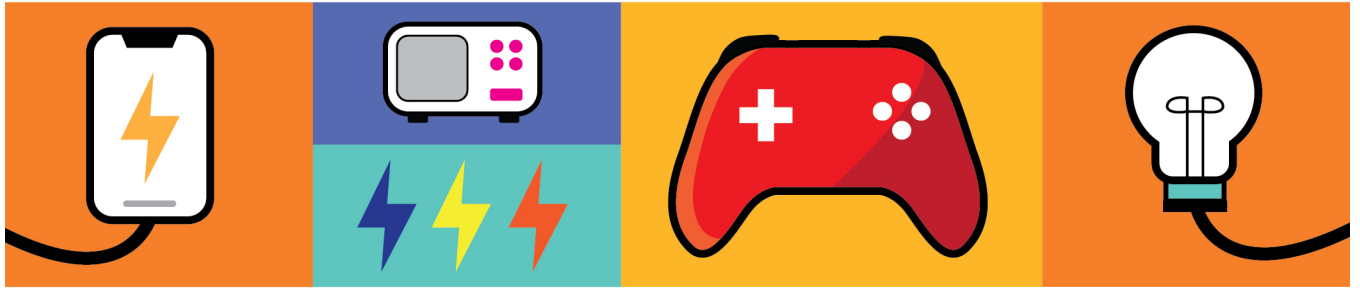
Left, PRECorp member service representative Macee Stocker checks in members prior to the meeting.

The Value of Electricity

Did you know the average daily cost of electricity is about \$5? When you think about all the ways we use electricity every day, that's a great value!

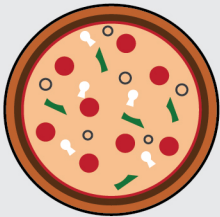


A day's worth of electricity powers: home heating/cooling, electronics, lighting, major appliances and more.



Look at the everyday items below, then add a plus (+) sign next to the items you think cost more than daily electricity. For items you think cost less than daily electricity, add a minus (-) sign.

1.



Large Pizza

2.



1 Movie Ticket

3.



Candy Bar

4.



Video Game

5.



Ice Cream Cone

6.



Plush Toy

Answer Key: + '9 - '5 + '4 - '3 + '2 + '1

Foundation provides preschool tuition assistance in memory of Shayna Ritthaler

The Powder River Energy Foundation awarded preschool tuition scholarships totaling \$3,465 to students at six preschools in Crook and Weston counties. This is the fifth allotment in a sustaining preschool tuition assistance program as part of the Shayna Ritthaler Memorial Scholarship.

The Powder River Energy Foundation (PRECorp Foundation) Board of Directors awarded funds to Weston County Children's Center/Region III Developmental Services and Sundance's Kid Prints, Inc. preschool.

The scholarship fund was established after the tragic 2019 homicide death of Shayna Ritthaler, a high school student with ties to Moorcroft and Upton high schools. Shayna enjoyed her life with her sister Josalyn, and their grandparents Reuben and Shelly Ritthaler, on their ranch near Upton.

Region III provides early intervention and special education services for birth to school-age children. Their



service areas include Crook and Weston counties, with preschools in Newcastle, Upton, Hullett, Moorcroft, and Sundance. Kid Prints, Inc. provides preschool education and kindergarten readiness to children ages 4 and 5.

"This distribution of scholarship funds is part of an ongoing effort to support early childhood education in memory of Shayna," said Foundation Board President John Flocchini. In 2021, the Foundation raised more than \$50,000 in the raffle of a donated '72 Mustang Mach I. According to the wishes of the car's donor, the program has expanded the scholarship to more students in more preschools.

"This is a critical part of the Foundation's overall mission to help working families in need in northeast Wyoming. These students will benefit from extra days in their preschool programs to help them be ready to start kindergarten on Day 1," Flocchini said.

The Foundation will manage the scholarship fund in an investment strategy to last until at least the year 2040 to provide for future generations of students.

Miss the Annual Meeting prizes?



You can still pick up a free lip balm, 2026 PRECorp Calendar and history book - while supplies last - at our offices in Sundance or Gillette. The calendars feature the photographic talent of PRECorp employees and the natural beauty of northeast Wyoming. The history books cover the development of rural electric cooperatives in northeast Wyoming. Sign up for Operation RoundUp® and get a walking stick (while supplies last.)



Annual Meeting...

from page 5.

to others in the energy industry. We thank all of those who came before us these past 80 years and celebrate the round number of 80 today."

To close out the meeting, PRECorp Director Paul Baker presented the Earl Christensen Award to Wyoming State Senator Eric Barlow for his support of the cooperative model when it comes to state legislation. Barlow said that Earl and Mae Christensen were "gems of humanity" who served their community their whole lives. "How do we make lives better? Sometimes the discussions are difficult and challenging... but we are doing it so the next generation has the same opportunities that we have," Barlow said.



PRECorp photo

The 81st Annual Meeting will be held Saturday, August 22, 2026, in Buffalo.

PRECorp members serve as election judges, tallying ballots in the three contested elections for the Board of Directors.

Time of Use discount hours explained

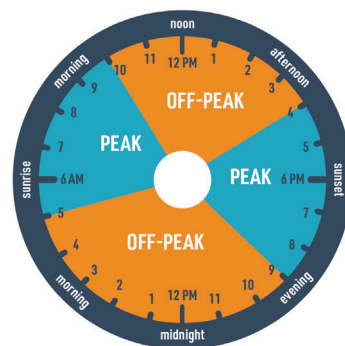
PRECorp's Time-of-Use Rate extends from October through May. Members can achieve lower off-peak rates for electricity usage from 10 a.m. to 4 p.m. beginning in October.

This rate option is one more way PRECorp provides members with affordable rates and options that fit their individual energy needs. The concept behind this program is fairly simple: rather than a single flat rate for each unit of energy used (e.g. kWh), you pay different rates for the electricity you use based on the time of day and season. Under this voluntary rate option, *when* you consume electricity is just as important as the amount of electricity you use.

On Time-of-Use, rates are lower during midday and overnight because of the decreased demand for electricity during those times. To help lower costs, you can shift energy use to off-peak periods (when electricity prices are lowest). Our Time-of-Use Rate also changes seasonally, because electricity demand differs between summer months and the rest of the year. These rates can make a big difference for members particularly in the areas of heating and cooling; major appliances; and water pumping equipment.

To learn more contact your Member Service Representative at 800-442-3630.

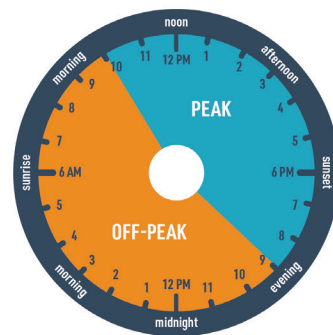
TIME OF USE - OCTOBER THROUGH MAY



THE TIME OF USE RATE PLAN HAS TWO PERIODS:

- \$ **Lowest price (OFF-PEAK):**
14 hours each day
- \$\$ **Highest price (PEAK):**
10 hours each day

TIME OF USE - JUNE THROUGH SEPTEMBER



THE TIME OF USE RATE PLAN HAS TWO PERIODS:

- \$ **Lowest price (OFF-PEAK):**
13 hours each day
- \$\$ **Highest price (PEAK):**
11 hours each day

Regular business: 1-800-442-3630 Report an outage: 1-888-391-6220

www.precorp.coop

Powder River Energy Corporation is an equal opportunity provider and employer.