



PRECorp News

APRIL 2025

Tampering is not safe, not tolerated by PRECorp

Incidents of vandalism, copper theft, or other intentional damage to PRECorp poles, lines, meters, and transformers are an ongoing concern.

Some incidents involve shots fired at poles or substations. Others involve the removal of copper wire from PRECorp infrastructure, or risky meter tampering as a direct power theft.

PRECorp takes a firm stance against these types of behaviors because any contact with energized equipment can cause high-voltage shocks with severe burns, or fatal electrocution.

Another cost is to the law-abiding members. All it takes is one incident to put hundreds of PRECorp members in the dark.

Tampering, theft, and vandalism do not always show up immediately, but eventually crews discover the damage during routine inspections or maintenance. Sometimes the damage causes delayed-reaction outages weeks or months later.

PRECorp crews work very hard in all conditions to provide reliable power, and man-made outages due to vandalism or theft put them at risk and create unnecessary hardships for our members.

As PRECorp members, we share ownership of this equipment equally and acts of vandalism come at a cost to us all because they can impact the cost to safely deliver power.

We need your help to keep our equipment safe, prevent outages, and protect lives. If you see anyone other than our utility personnel or contractors around substations or other electric facilities, report it to your local authorities, or call the PRECorp 24-hour dispatch number at 1-888-391-6220.

PRECorp works with local law enforcement to investigate the crimes. If anyone has information about specific incidents of vandalism, copper theft, or suspicious tampering with PRECorp equipment, please call local law enforcement. All information will be kept anonymous.

Follow us on these social media channels:



Listen to our podcast at:



Regular business: 1-800-442-3630 • Report an outage: 1-888-391-6220
www.precorp.coop

In This Issue:

CEO Straight Talk

May is Electrical Safety Month

Nominating committee

Foundation donations

24th Annual Durham Ranch Buffalo Stampede

#ThankALineworker



BRIAN MILLS,
CEO

Telephone Townhall meeting Wednesday, May 28

Plan to join me on Wednesday, May 28, for an important Telephone Town Hall with the PRECorp membership. I will be joined by PRECorp VP of Operations Rich Haloran as we share some insights on PRECorp's Wildland Fire Mitigation Plan and answer your questions about the cooperative and our service. We will call PRECorp members at 6:30 p.m. to start the call. Also, join us on Facebook live, or dial toll free 888-886-6602 to participate via phone.

As I draft this article, I am just coming off following another high school basketball season and the first round of the NCAA March Madness® tournament is just starting.

Now this wasn't the first season of prep basketball I have watched as I have had kids participating in basketball for several years now. But in a moment of randomness, I observed a similarity between a coach creating a high pressure, high stress situation for the opposing team by using the full-court-press strategy, and that same frantic sense that we can sometimes feel when operating the coop. With all the changes occurring within our industry, with technology, and within our state and federal government, it sometimes feels like the "full court press" is on.

Hang with me and let me explain a bit more. First, let's keep in mind that our goal is to win the game. For us that is delivering on our mission of "Working to improve lives through energy." We score baskets when we deliver on our "Big Three", our objectives of delivering A+ Member Experience, Great Rates, and being a Trusted Energy Partner.

Now back to the full-court-press analogy. The intent of the full court press is not necessarily to get a steal but to get the pressed team to make a poor decision which will give the pressing team the ball back. Maybe it is a poor pass, or a hurried dribble down the floor that leads to a traveling or double dribble violation, or simply a quick or poor shot that can be rebounded. In any case, the press is intended to make the opposing team play differently than they had planned, and ultimately not allow them to run their game plan as designed.

Take care of the ball! Make good passes! Box out! Run the play! All of these directions from the coach encourage the team to control the things they can and to execute the fundamentals that they have practiced many times. At half-time, it isn't uncommon to hear a coach say something like this during their court-side interview, "We just need to get back to playing our style of ball... and do what we do well... and not let them take us out of our game... and stay aggressive."

What sound advice that is for handling the pressures surrounding our industry that I spoke of earlier. For us that means coming to work each day and living our values, executing on our core business with efficiency and holding a member perspective in our decision making. Our best service to you is when we are controlling the things we can control

and executing our game plan. I have included a picture of our strategy (our game plan).

Recently, I had the opportunity to spend most of the day with the entire team in one room. We only get to do this one time per year and so it is a special time to get to see everyone. I enjoy watching the team interact as the camaraderie, team pride, and

overall sense of purpose get renewed. I want to assure you as member-owners of the coop, that your team is locked in and focused on delivering safe, reliable, and affordable energy.

I will close by using a line that you will most assuredly hear a coach say during the post-game interview. "I am just so proud of our team, the way they stick together and fight through the adversity..." Powder River Let'er Buck!

Working to improve lives through energy.



WIRED FOR SERVICE.

**LINEWORKER
APPRECIATION DAY**

APRIL 14, 2025

We thank the entire PRECorp System Operations team for their commitment to powering our local communities.

PHOTO: PRECorp linemen replace switches on a 69kV line north of Wyodak in Campbell County.



Calendar:

The list of PRECorp events includes Board meeting dates, holidays, telephone town hall meetings, and more.

- **MEETING CHANGE:** Tuesday, April 22 - PRECorp Board of Directors meeting, 7:30 a.m., teleconference
- Tuesday, April 22 - PRECorp Foundation Board meeting, 9 a.m., Gillette
- **MEETING CHANGE:** Tuesday, May 6 - PRECorp Board of Directors meeting, 9:30 a.m., Gillette
- Tuesday, May 27 - PRECorp Foundation Board meeting, 9 a.m., teleconference
- Wednesday, May 28 - Telephone Town Hall meeting with CEO Brian Mills, 6:30 p.m.
- Saturday, June 7 - Durham Ranch Buffalo Stampede 5K/10K Walk/Run
- Friday, June 13 - Deadline for PRECorp Director candidates to file nominating petitions

24th Annual

Durham Ranch Buffalo Stampede

Saturday, June 7 - 7:30 a.m.

5K/10K walk-run

Register now at: www.precorpfoundation.org



Foundation supports volunteer firefighters

The Powder River Energy (PRECorp) Foundation Board of Directors has given direct support to the Pine Haven Volunteer Fire Department (VFD) to purchase firefighting gear, the Hulett VFD for an emergency pump replacement, and a surplus truck to the Powder River Fire District at Kaycee.

This year the Pine Haven VFD will put the Foundation's \$5,000 toward a matching grant with the state to purchase much-needed gear and oxygen tanks for local firefighters. "Over 30,000 people use Keyhole State Park and the surrounding area," said volunteer Charlie Gulley. "Shared emergency services during times of crisis are common and the better equipped communities are, the better they can work together." Gulley said the goal is to raise \$20,000, but the Town of Pine Haven has agreed to budget any amount not raised to make sure the equipment can be purchased to protect the town and the surrounding area.

"The community of Pine Haven has many community fundraisers throughout the year to support its needs," said Foundation Executive Director Joe Roth. "Pine Haven and the adjacent Keyhole Reservoir are major recreational areas drawing thousands of visitors each year. It is important that the local first responders have updated equipment to ensure people and property are protected."

The Foundation donated **\$8,000 to the Hulett VFD** to complete an emergency replacement of a brush truck water pump.

The department and its eight volunteers respond to fire and traffic emergencies in Hulett and the surrounding Bear Lodge area. The crew has ordered a new pump for Brush Truck #7 to ensure it will be operational for the 2025 fire season.

"We appreciate the Foundation in keeping our equipment functioning and in good repair so that our fire response may continue in a timely manner," said department Secretary-Treasurer Bernice 'Bunny Mae' Engberg.

"The Foundation Board remarked that this donation is vital for the residents and visitors to this area of northeast Wyoming, so they have all of the fire and emergency services available to them when needed," said Roth. "The wildfire season of 2024 is a prime example of how an emergency can quickly erupt, and how the local



PRECorp photo

Foundation reps Tim Velder, left, and Zeta Anderson, right, present a \$5,000 donation to the Pine Haven VFD.

volunteer fire department needs to match that with all of its essential equipment ready to respond."

In 2024, the Hulett VFD responded to 15 wildfires; 5 car accidents; and 1 structure fire. The volunteers, who range in age from 28-62, also do chimney cleaning as a safety service.

Lastly, in 2024 PRECorp and the Foundation donated a surplus field service truck (2017 Ford F550 diesel truck) to the **Powder River Fire District in Kaycee**. The department has the unit ready for service in 2025. (See photo below.)

For more information on the Foundation go to: www.precorpfoundation.org



Courtesy photo

The former PRECorp field service truck is now in use for the Powder River Fire District at Kaycee.

May is Electrical Safety Month

May is National Electrical Safety Month. But at PRECorp, safety is a daily emphasis, throughout our system, all year long - at work and at home.

Because we are looking out for the best interests of our members, we raise awareness about safety and ways to avoid accidents, keep our employees safe, and provide reliable service for our members.



Although you don't see the actual electricity flowing through the line, you would certainly feel it if you had an encounter with electricity. Touching lines or equipment with high voltages can not

only cause injury, it can take a life.

However, safety concerns stretch beyond the immediate tasks of climbing poles and restoring power. We must consider safety in all aspects of our day.

People have accidentally driven vehicles and large

equipment into power poles and overhead lines. Diggers sometimes discover too late they have hit power cables buried underground.

Animals and even tiny insects are also in the picture. These creatures find ideal hangouts on our power lines, cross arms, insulators, and other attachments. Bugs hide in the tight spaces in the guards and insulators, and birds daringly try to root them out. The resulting electrocutions of the predators can knock out power or cause a fire.

Vines, trees, and bushes tend to grow quickly into our lines. Keeping vegetation trimmed and away from the poles, power lines, and other electrical equipment takes regular maintenance. Fires can start when lightning hits a pole, or wind slaps power lines together. It does not take much of a spark on dry grass or timber for high winds to push a fire several miles across open Wyoming countryside.

Are there some hazards around power services to your residence, ranch, or business that could result in a tragedy? If you notice potential hazards involving PRECorp facilities, call 1-800-442-3630, to report the facility location and nature of the problem.

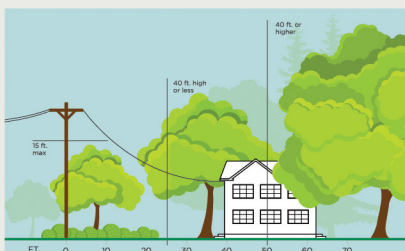
Continued on pages 6-7...

3 Ways to Help Limit Tree Trimming

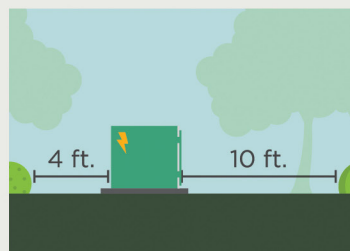
Did you know electric utilities are required to trim trees and other types of vegetation that grow too close to overhead power lines? We know you love your trees, and we will do everything we can to avoid trimming them.

Here's how you can help:

1. Plant trees in the right place. Trees that will be <40 ft. should be planted at least 25 ft. away from power lines (>40ft. should be at least 50 ft. away).



2. Don't block pad-mounted transformers. Plant shrubs at least 10 ft. away from transformer doors and 4 ft. from transformer sides.



3. Report dangerous branches. If you spot a tree or branch that is dangerously close to power lines, please let us know.



Electrical Safety Month...

from page 5.

In the home

Because of the higher loads of the newer electric devices, demand for energy can overburden an older home's electrical system.

Some tips:

- Make sure entertainment centers and computer equipment have plenty of space around them for ventilation.
- Use extension cords as a temporary solution, and never as a permanent power supply.
- Do not place extension cords in high traffic areas, under carpets, or across walkways, where they pose a potential tripping hazard. Heat from the cord can also be trapped and cause a fire.
- Use a surge protector to protect your computer and other electronic equipment from damage caused by voltage changes. This equipment is designed to break so be prepared to change them frequently.
- The wattage of the bulbs you use in your home should match the wattage indicated on the light fixture. Overheated fixtures can lead to a fire.
- Keep all liquids away from electrical items such as televisions and computers.
- Heavy reliance on power strips is an indication that

you have too few outlets to address your needs. Have additional outlets installed by a qualified, licensed electrician.

- Check refrigerator coils quarterly to eliminate dirt buildup. This can increase efficiency and remove fire hazards.
- Ensure all countertop appliances are located away from the sink. GFCI outlets are required in kitchens, bathrooms, and outdoors. These outlets weaken and fail over time, so know when to replace them.
- All appliance cords should be placed away from hot surfaces. Pay particular attention to cords around toasters, ovens, and ranges. Cords can be damaged by excess heat.



And remember fire safety:



- The top and the area above the cooking range should be free of combustibles, such as potholders and plastic utensils. Storing these items on or near the range may result in fires or burns. Range hood filters also need to be replaced regularly.
- Nearly two-thirds of fire deaths result from fires in homes without working smoke alarms. Smoke alarms should be located on every level of your home, inside each bedroom and outside each sleeping area.
- Test smoke alarms every month. Batteries - even in the hard-wired models - should be replaced every six months, and remember smoke alarms have a limited life expectancy.
- Consider installing a carbon monoxide detector.
- Clean your dryer filter with each use, and check the dryer vent periodically for lint buildup. It can be a fire hazard.
- Talk to your family - including small children - on planning an emergency escape route - they are more likely to remember a plan they help create.

Continued on page 7...

Electrical Safety... from page 6.

Outdoor hazards

- Do not attach anything to a power pole. Nails, tacks, staples, wires, satellite dishes, deer stands, basketball hoops, signs, and other items create immediate hazards for you and our crews if they need to respond to an outage. (Wyoming law also considers this trespassing.)
- Be aware of clearances with your vehicles, equipment, or roof work. Look up. Look all around you to make sure you are at least 15-feet from a pole or overhead line. A few seconds to look can save you the aggravation of an accident or power outage.
- Do not plant, build, pile or stack anything beneath a power line.
- Look up. Carefully check the location of all overhead wires before using a ladder. All ladders that touch

power lines - even ladders made of wood - can shock or electrocute people touching them.

- (Right) Call 811 or 1-800-849-2476 (One Call of Wyoming) at least two business days before you dig. Make sure locates

are completed. Because of landscaping or erosion, lines could be close enough to the surface that you could hit them with that first plunge of the shovel. The service is free in some cases. Repairs are not.

- Heed the warning signs posted on PRECorp electrical facilities.
- Check for weather damage around your home, ranch, or business.
- If you encounter a damaged power pole or line, always assume it is energized. Do not touch or try to move downed power lines.
- Stay in your vehicle if you hit a power pole or power line.
- If you must get out of the vehicle, keep both feet together and jump clear. Do not step onto the ground while touching your vehicle.
- If you happen upon an accident involving a pad-mount transformer (that green box), power pole, or line, call 911 immediately. Do not approach the scene because electricity from energized lines can kill you, even if you are several yards away.

ELECTRICAL SAFETY DO'S AND DON'TS

DON'T:

Overload outlets with too many devices.

<p style="text-align: center;">Know what's below. Call before you dig.</p> <div style="border: 1px solid black; padding: 5px; text-align: center; margin: 10px 0;"> <p>STARTING A NEW PROJECT?</p> <p>Here are 5 steps for safe digging.</p> </div>	<div style="text-align: center; background-color: #00a651; color: white; border-radius: 50%; width: 40px; height: 40px; margin: 0 auto; display: flex; align-items: center; justify-content: center;">1</div> <p style="text-align: center; font-weight: bold; margin: 5px 0;">NOTIFY</p> <div style="text-align: center; margin: 10px 0;"> </div> <p style="font-size: small; margin: 10px 0;">Call 811 or make a request online two to three days before you plan to start your project.</p> <div style="text-align: right; margin-top: 10px;"> </div>
<div style="text-align: center; background-color: #00a651; color: white; border-radius: 50%; width: 40px; height: 40px; margin: 0 auto; display: flex; align-items: center; justify-content: center;">2</div> <p style="text-align: center; font-weight: bold; margin: 5px 0;">WAIT</p> <div style="text-align: center; margin: 10px 0;"> </div> <p style="font-size: small; margin: 10px 0;">Wait two to three days for a response to your request. Affected utilities will mark underground lines.</p>	<div style="text-align: center; background-color: #00a651; color: white; border-radius: 50%; width: 40px; height: 40px; margin: 0 auto; display: flex; align-items: center; justify-content: center;">3</div> <p style="text-align: center; font-weight: bold; margin: 5px 0;">CONFIRM</p> <div style="text-align: center; margin: 10px 0;"> </div> <p style="font-size: small; margin: 10px 0;">Confirm that all affected utilities have responded by comparing the markers to the list of utilities the 811 call center notified.</p>
<div style="text-align: center; background-color: #00a651; color: white; border-radius: 50%; width: 40px; height: 40px; margin: 0 auto; display: flex; align-items: center; justify-content: center;">4</div> <p style="text-align: center; font-weight: bold; margin: 5px 0;">RESPECT</p> <div style="text-align: center; margin: 10px 0;"> </div> <p style="font-size: small; margin: 10px 0;">Respect the markers and use them as a guide for the duration your project.</p>	<div style="text-align: center; background-color: #00a651; color: white; border-radius: 50%; width: 40px; height: 40px; margin: 0 auto; display: flex; align-items: center; justify-content: center;">5</div> <p style="text-align: center; font-weight: bold; margin: 5px 0;">DIG CAREFULLY</p> <div style="text-align: center; margin: 10px 0;"> </div> <p style="font-size: small; margin: 10px 0;">If you can't avoid digging near the provided markers, consider moving your project.</p>

Director nominating process underway

The 2025 PRECorp Board of Directors election process is officially underway with the designation of the nominating committees for three PRECorp counties.

The following are ways to get on the ballot:

- Be nominated by the committee appointed by the PRECorp Board of Directors. See contact names and numbers below.
- Return a nominating petition, signed by at least 25 PRECorp members, by June 13, 2025.

The following Director seats are up for election in 2025:

- **Campbell County (Gerry Geis, incumbent)**
Committee members:
 - Mike Shober (307-299-6796)
 - Jaime Tarver (307-682-4929)
- **Johnson County (Jim Purdy, incumbent)**
Committee members:
 - Jackie Reimler (307-684-7732)
 - Gordon Taylor (307-660-2456)
- **Weston County (Ty Miller, incumbent)**
Committee members:
 - Walt Christensen (307-746-2421)
 - Reuben Ritthaler (307-468-2206)

Any PRECorp member from the aforementioned director districts can run for a three-year term on the Board, providing the member meets the following qualifications:

- Must reside within the service territory of the county from which he/she is elected.
- *However, members taking service outside the counties of Campbell, Crook, Sheridan, Johnson, or Weston shall be deemed to be a member of and within the area served by the county closest to the nearest meter serving the members' residence;*
- Must be a member receiving electric energy from the Corporation;
- May not be in any way employed by, or have a substantial financial interest in, a competing enterprise

or a business selling electric energy or supplies to the Corporation.

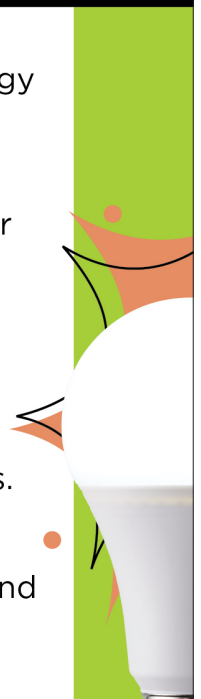
Contact PRECorp at 1-800-442-3630, if you would like to stand for nomination to the ballot or, with specific questions regarding eligibility.

Election process dates:

- **Friday, May 23:** Deadline for nominating committees to post their list of candidates.
- **Friday, June 13:** Deadline for candidates to file nominating petitions at a PRECorp business office.
- **Thursday, July 17:** Publication of director candidates, notice of August 23 Annual Meeting, mail-in ballot, and Annual Report.
- **Saturday, August 23:** PRECorp Annual Membership Meeting, Gillette Cam-Plex Energy Hall. In-person voting, vote tabulation, announcement of results.

ENERGY EFFICIENCY TIP OF THE MONTH

Turn your suds into savings. Lower your energy use in the laundry room by washing clothes with cold water whenever possible, as heating water accounts for most of the energy used in a laundry cycle. Wash full loads to make the most of energy savings, and use high-efficiency detergent designed for cold washes. For drying cycles, clean the lint filter before each load to improve airflow and use dryer balls to reduce drying time.



Regular business: 1-800-442-3630

Report an outage: 1-888-391-6220

www.precorp.coop

Powder River Energy Corporation is an equal opportunity provider and employer.