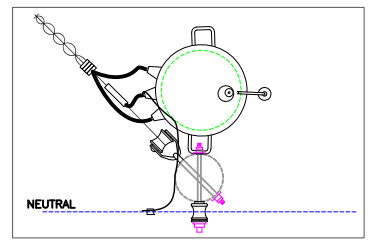
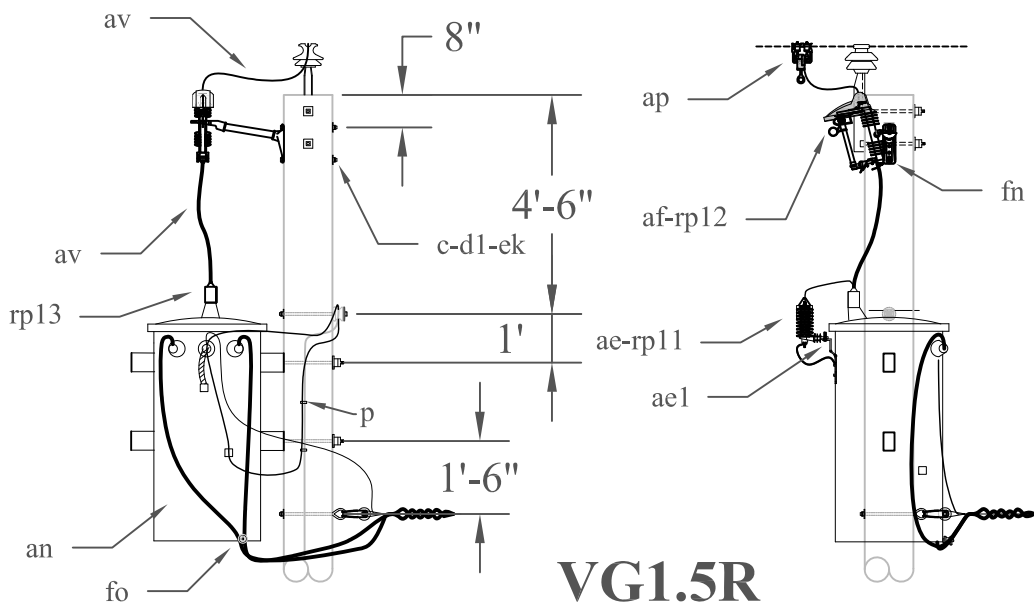


VG1.4R



Notes

1. For Small conductor assemblies the dimension between the system neutral and top transformer bracket shall be 12 inches, for large conductor tangent poles the distance between system neutral and top transformer bracket shall be 18 inches.
2. Install item "fo" if service weather head or service take-off is more than 12 inches below bottom of transformer can.



VG1.5R

VG1. 4R 5R					VG1. 4R 5R				
ITEM	PART #	MATERIAL	QTY	QTY	ITEM	PART #	MATERIAL	QTY	QTY
c	9372-	Bolt, Machine, 5/8" X Req'd Length	2	4	ap	2147	Basket, Hot Line	1	1
d1	9091	Washer, Square 2" X 2"		2	av	3114	Wire, #2 Insulated	8'	8'
d2	9092	Washer, Curved 3" X 3"	2	2	cj	3112	Wire, #2 Strandand Cu	15'	15'
p		Connectors, Compression Type, As Req'd			ek	9096	Locknut, 5/8"	2	4
ae	80	Arrester, 18kV	1	1	fn	8524	Bracket, 1ph 1-Pos Term Fiber		1
ae1	9391	Arrester Mounting Bracket	1	1	fo	9052	Bracket, Transformer Secondary As Req'd		
af	4150	Cutout	1	1	rp 11	4720	Arrester Cap Cover	1	1
an		Transformer, 14.4kV	1	1	rp12	4725	Fusible Switch Cap Cover	1	1
ap	2140	Clamp, Hot Line Tap	1	1	rp 13	4705	Small Transformer Bushing Cover	1	1

Design parameters:

1. Install transformer on tangent poles on the opposite side of pole from primary neutral.
2. When it is necessary to install transformer in the same quadrant as service drop, attach service drops 4 inches below the transformer.
3. Cover secondary terminals with moisture seal and/or dress conductor ends downward to prevent entry of moisture. (Minimum bending radius is six times the overall cable diameter.)

**24.9/14.4KV, SINGLE PHASE
CONVENTIONAL TRANSFORMER
(TANGENT POLE)**

RUS
2/27/2019
REV. 0



**VG1.4R
VG1.5R**