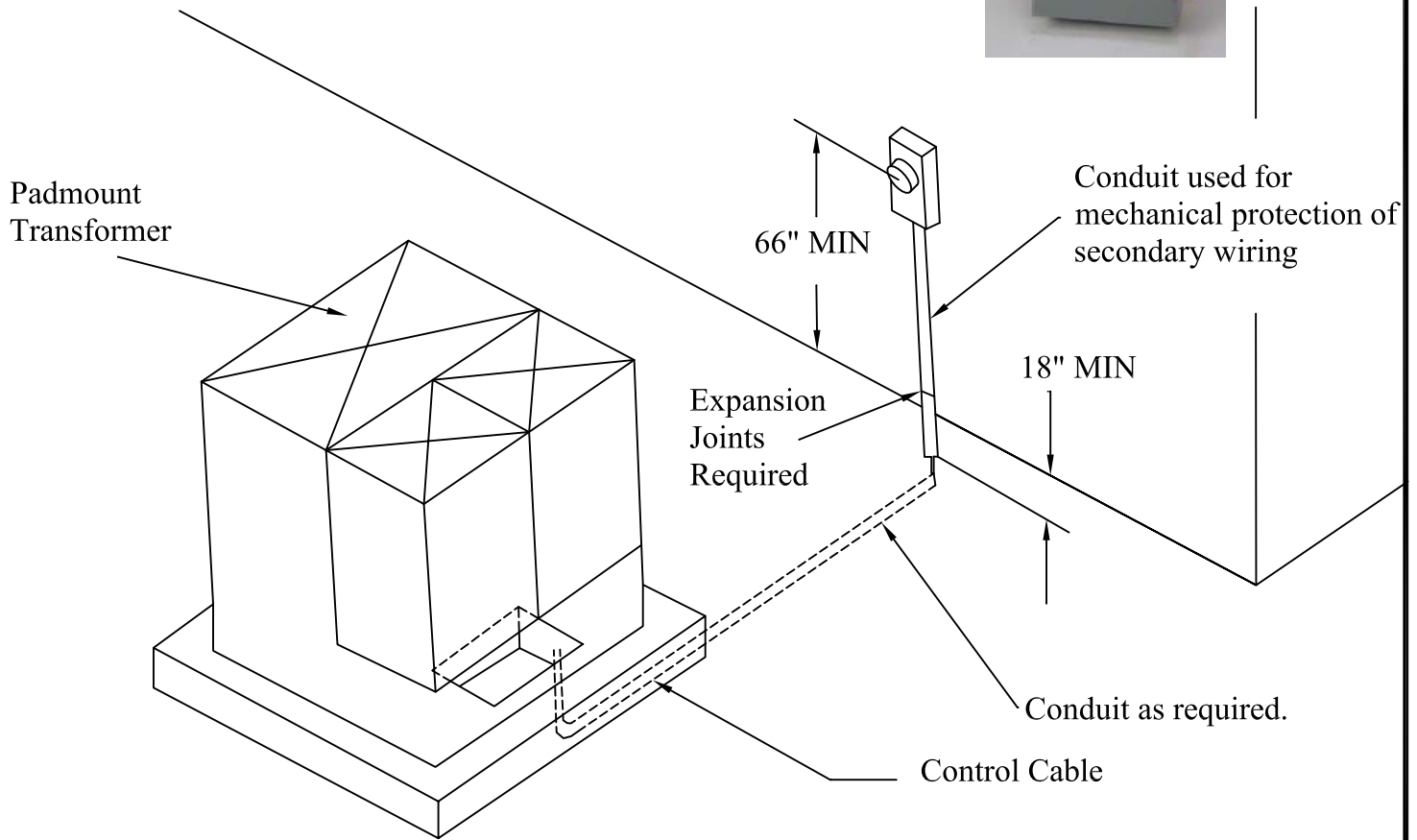


1. Method for installation of metering to meter socket on building wall.
2. Meter height shall be between 66" and 72" to center of meter.
3. Meter socket must not be attached directly to padmounted transformer.
4. Conduit shall be used for secondary control wires to meter socket.



MATERIALS LISTING

ITEM	DESCRIPTION	QTY	UNIT	PREC#
1	2" Conduit	As Reg.	Ft.	Non-Stock
2	2" Straps	As Reg.	Ea.	9160-3
12	13T 400A Instrument Rated Three Phase Meter Box	1	Ea.	9186
13	Form 9S/8S Class 400 120-480V 4-Wire 3Ø Meter	1	Ea.	

Design Parameters: > See design notes above. > 4/0 URD Al Quadruplex (290A raring) recommended for secondary conductor.	120/208V A200 - 25kVA Transformers (75kVA Bank) Underground to 4-Wire Self Contained Transocket Mounted on Building		
	04/29/08		UM8.7A-02SC
	Rev. 0		