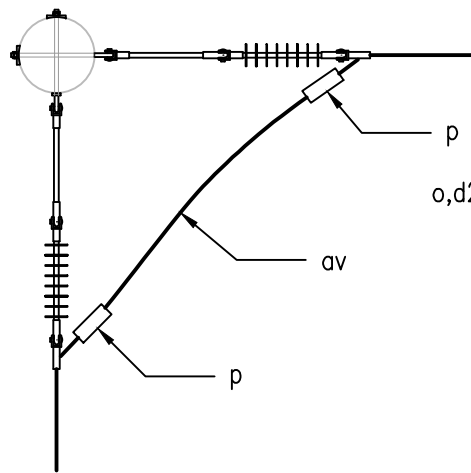
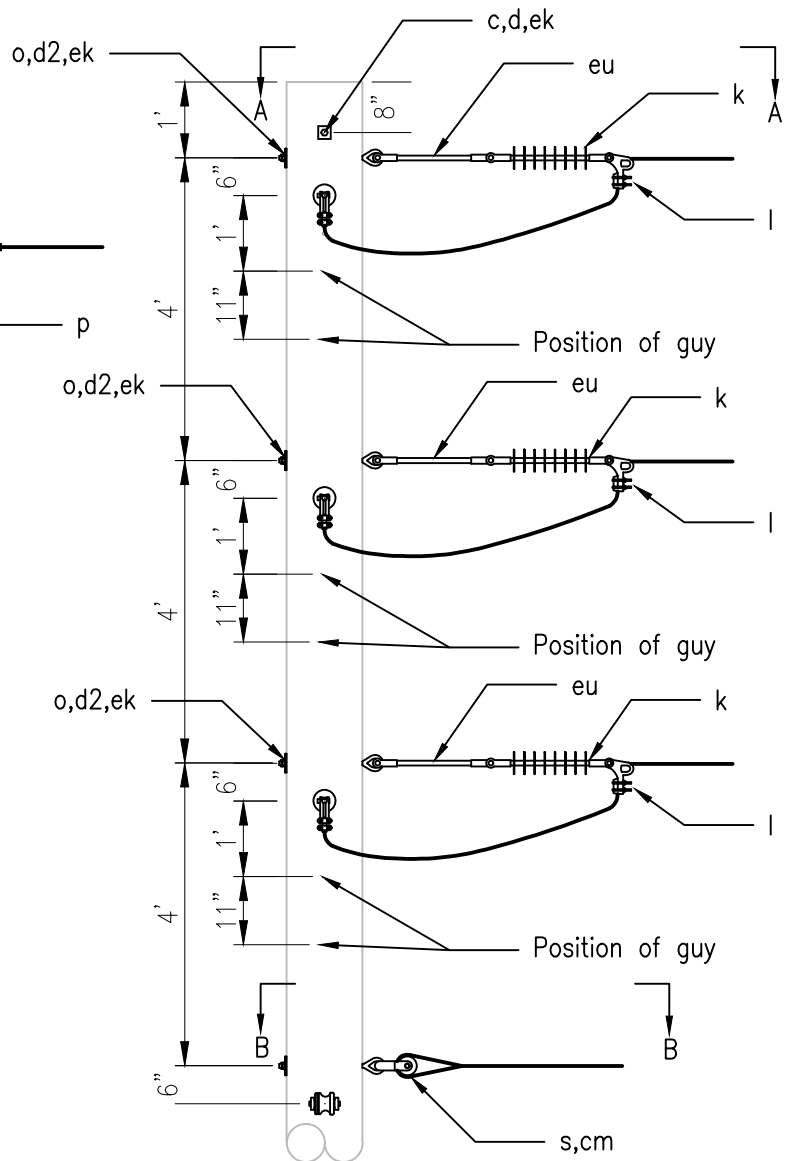
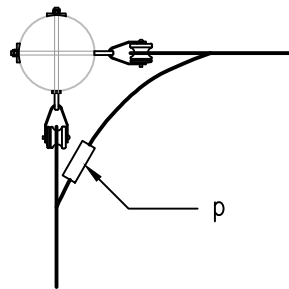


### Section A-A



### Section B-B



ITEM	PART #	MATERIAL	QTY
c	9372	Bolt, Machine 5/8" X Req'd Length	1
d	9091	Washer, Square 2" X 2" X 11/16"	2
d2	9092	Washer, Curved 3" X 3" X 11/16"	8
k	4280	Insulator, Expoxilator 18.75"	6
l	2125	Clamp, Deadend	6
o	9368	Bolt, Oval Eye 5/8" X Req'd Length	8
p		Connectors, As Req'd	

ITEM	PART #	MATERIAL	QTY
s	2160	Clevis, Swinging	2
av	3116	Wire, Insulated Tap Cu	25'
cm	9472	Insulator, Spool 4"	2
ek	9096	Locknut, 5/8"	9
eu	4281	Link, Extension	6

**DESIGN PARAMETERS:**

- Allowable longitudinal load equals lesser of: 5,000 lbs. per conductor or manufacturer's specifications.

**Notes**

- VC1.014 is required for angles of 20° to 60°.

**24.9/14.4 kV, 3-PHASE  
Double Deadend Angle  
Large Conductor**

RUS  
10/24/2023  
REV. B



**VC4.2LR**